

MINING CABLE SOLUTIONS



MINING CABLES



Utilizing Prysmian Jacketing Technology

Prysmian mining cables are designed and manufactured for use on mining equipment where flame, abrasion, chemicals, moisture, impact, tearing and temperature extremes are part of the work environment. These cables are manufactured to resist harsh environments without compromising safety.



FEATURES

No matter the unique or demanding requirements, you can rely on Prysmian cables to deliver power and control in applications ranging from high atop seaport cranes to deep within mines.

For decades, industries have relied on Prysmian for high-quality wire and cable solutions. Our innovative designs and custom-engineered materials help extend cable life, resulting in reduced down-time, increased production and substantially lowered costs.

We serve an extensive range of markets with a competitive array of durable and dependable wire and cable solutions for virtually any industrial application.

- Engineered cable solutions for demanding environments including severe duty flexing and torsional stress
- Extra heavy duty cable that resists abrasion, chemical solvents, oil, flame and moisture
- Power and control cables to ICEA, CSA, VDE and BS Standards



Certifications, Listings & Approvals

Our cables meet and exceed the applicable ICEA standard for power, control and fiber cables.

International Commitment to Quality -- ISO-9000

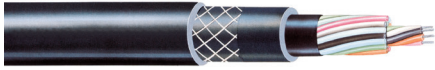
The quality management systems of our manufacturing facilities have been independently audited and certified to conform to the quality requirements set forth in ISO-9000. Our deep commitment to deliver quality products and services and our dedication to continually improve our practices are embodied in these certifications.

Global Mining Cable Experience

Over the years, Prysmian has developed extensive expertise on and open cast special operational conditions of underground mining. The high operational reliability and service life of Prysmian's reeling and trailing cables for mining is based on this experience. Our cables offer significant benefits to a broad variety of specialized mining professionals such as OEMs, specifiers, contractors, installers, mining companies and more.

ANACONDA® LEAD CURED CABLES

Type W Round or Flat



| | |
|------------------------|---|
| CONDUCTORS: | Flexible tinned copper |
| INSULATION: | 90°C EPR applications. |
| JACKET: | Reinforced extra heavy duty lead cured CPE with permanent markings. |
| RATINGS: | ICEA, MSHA, FT5 |
| VOLTAGE RATING: | 2kV |
| SIZES: | 8 AWG to 4/0 AWG, 2/C, 3/C, and 4/C |

Type SHD-GC

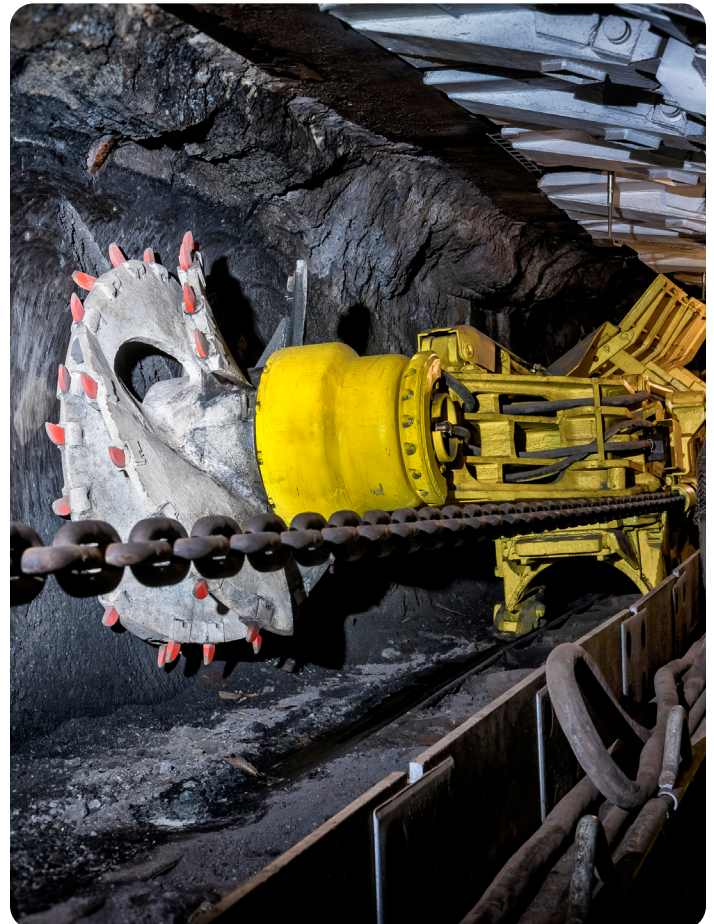


| | |
|------------------------|---|
| CONDUCTORS: | Flexible Tinned Copper |
| INSULATION: | Flexible Tinned Copper with Yellow Polypropylene Insulation |
| GROUND WIRES: | Two Flexible Tinned Copper |
| INSULATION: | 90°C EPR Applications |
| SHIELD: | Tinned Copper Braided shield with colored nylon phase ID |
| JACKET: | Reinforced extra heavy duty lead cured CPE jacket with permanent markings |
| RATING: | ICEA, MSHA, CSA, FT5 |
| VOLTAGE RATING: | 1kV |
| SIZES: | 6 AWG to 500 kcmil 2kV, 5kV, 8kV, 15kV and 25kV |

Type G or G-GC 2kV Round or Flat



| | |
|------------------------|--|
| CONDUCTORS: | Flexible Tinned Copper |
| GROUND CHECK: | Flexible Tinned Copper with Yellow PP Insulation. |
| GROUND WIRES: | Two flexible tinned copper |
| INSULATION: | 90°C EPR applications. |
| JACKET: | Reinforced extra heavy duty lead cured CPE with permanent markings |
| RATINGS: | ICEA, MSHA, FT5 |
| VOLTAGE RATING: | 2kV |
| SIZES: | 6 AWG to 500 kcmil 2G and 3/C |



MINING CABLES



MINE POWER FEEDER CABLES

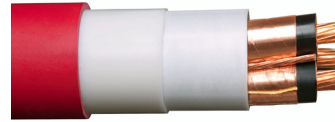
AIRGUARD™ Construction



| | |
|----------------------------------|---|
| CONDUCTORS: | Class B Stranded Bare Copper |
| GROUND WIRES: | 3/C Bare Copper for MPF or 2/C Bare Copper with 1/C Ground Check for MPF-GC |
| INSULATION: | 105°C EPR |
| ELECTRICAL FIELD CONTROL: | Extruded Thermoset Semiconducting Shield |
| LAY-UP: | 3/C Phase Conductors cabled with ground wires, rip cords and extruded EP filler |
| ARMOR: | Polymeric Armor Layer |
| DRYLAM LAYER: | Composite Layer Longitudinally Applied and Sealed Al Tape with Chemical Resistant Polymeric Layer |
| JACKET: | Heavy duty PVC or LSOH |
| RATING: | MSHA or CSA MPF or MPF-GC |
| VOLTAGE RATING: | 5kV - 35kV |
| SIZES: | 4 AWG to 1000 kcmil |

SHAFT CABLES

AIRGUARD™ Shaft Cables



| | |
|----------------------------------|---|
| CONDUCTORS: | Class B Stranded Bare Copper |
| GROUND WIRES: | 3/C Bare Copper for MPF or 2/C Bare Copper with 1/C Ground Check for MPF-GC |
| INSULATION: | 105°C EPR applications |
| ELECTRICAL FIELD CONTROL: | Extruded Thermoset Semiconducting Shield |
| LAY-UP: | 3/C Phase Conductors cabled with ground wires, rip cords and extruded EP filler |
| ARMOR: | Polymeric Armor Layer (AirBag™) |
| DRYLAM LAYER: | Composite Layer Longitudinally Applied and Sealed Al Tape with Chemical Resistant Polymeric Layer |
| JACKET: | Heavy duty PVC or LSOH |
| RATING: | MSHA or CSA MPF or MPF-GC |
| VOLTAGE RATING: | 5kV - 35kV |
| SIZES: | 2 AWG to 1000 kcmil |

Anacond® Type MP-GC



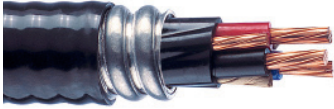
| | |
|------------------------|---|
| CONDUCTORS: | Class B Bare Copper |
| GROUND WIRES: | 2 Class B Bare Copper |
| INSULATION: | 90°C XLPE or EPR |
| GROUND CHECK: | Bare Copper with yellow polypropylene insulation |
| SHIELD: | Bare Copper tape shield with colored mylar tape phase ID |
| JACKET: | Heavy duty PVC lead cured CPE or PVC with permanent marking |
| RATING: | ICEA, MSHA, CSA, FT5 |
| VOLTAGE RATING: | 5kV - 25kV |
| SIZES: | 6 AWG to 500kcmil |



MINING CABLES

TECK CABLES

Low Voltage Teck (Multi-Conductor)



| | |
|---------------------------|---|
| CONDUCTORS: | Class B Stranded Bare Copper |
| INSULATION: | XLPE Insulation |
| GROUND/BOND WIRES: | Class B Stranded Bare Copper Sized per CSA |
| ARMOR: | Aluminum or Galvanized Interlocked Armor |
| INNER JACKET: | Sunlight Resistant PVC Jacket |
| OUTER JACKET: | Low Temperature, Sunlight Resistant PVC Jacket |
| RATING: | CSA , FT4, HL |
| VOLTAGE RATING: | 600v/1kv |
| SIZES: | 14 AWG to 10 AWG, up to 50/c 8 AWG to 500kcmil |

Low Voltage Teck (Single Conductor)



| | |
|------------------------|---|
| CONDUCTORS: | Class B Stranded Bare Copper |
| INSULATION: | XLPE Insulation Rated |
| BOND WIRE: | Helically Applied Bare Copper Wires with overall binder tape |
| ARMOR: | Aluminum Interlock |
| INNER JACKET: | Sunlight Resistant PVC Jacket |
| OUTER JACKET: | Low Temperature, Sunlight Resistant PVC Jacket |
| RATING: | CSA , FT4, HL |
| VOLTAGE RATING: | 1kv |
| SIZES: | 6 AWG to 1000kcmil |

Medium Voltage Teck (Multi-Conductor)



| | |
|--------------------------------------|---|
| CONDUCTORS: | Class B stranded Bare Copper |
| INSULATION: | XLPE Insulation |
| GROUND/BOND WIRE: | Class B stranded Bare Copper sized per CSA |
| ELECTRICAL FIELD CONTROL: | Extruded Thermoset Semiconducting Shields |
| METALLIC SHIELD: | Bare Copper Tape applied with a maximum 15% Gap |
| LAY-UP: | 3 Phase Conductors cabled with ground/bond wire and fillers as required |
| ARMOR: | Aluminum Interlock or Galvanized Steel Interlock Armor |
| INNER JACKET: | Sunlight Resistant PVC Jacket |
| OUTER JACKET: | Low Temperature, Sunlight Resistant PVC Jacket |
| RATING: | CSA, FT-4, HL |
| VOLTAGE RATING: | 5-35kV shielded; 5kV non- shielded; & Risertek |
| SIZES: | 6 AWG to 1000kcmil |



MINING CABLES

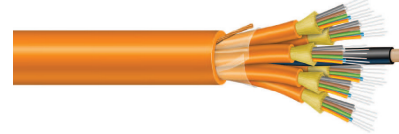
FIBER OPTIC CABLES

RLTM Series – Loose Tube Heavy Duty Cable



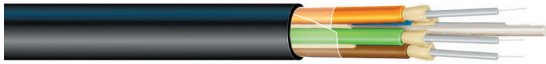
| | |
|-------------------------|--|
| FLAME RATING: | Riser (OFNR /FT4) / MSHA |
| JACKET MATERIAL: | Flame Retardant Polyvinyl Chloride |
| FIBER COUNT: | 2 to 144 |
| FIBER TYPE: | Single-Mode (ESMF, Bend- Insensitive) Multimode (62.5/125-OM1, 50/125-OM2+, OM3, OM4) |

S816 Series – Tight Buffer Breakout Cable



| | |
|-------------------------|--|
| FLAME RATING: | Riser (OFNR /FT4) / MSHA |
| JACKET MATERIAL: | Flame Retardant Polyvinyl Chloride |
| FIBER COUNT: | 2 to 36 |
| FIBER TYPE: | Single-Mode (ESMF, Bend- Insensitive) Multimode (62.5/125-OM1, 50/125-OM2+, OM3, OM4) |

S946 Series – Tight Buffer Pressure Extruded Breakout Cable



| | |
|-------------------------|---|
| FLAME RATING: | Riser (OFNR /FT4) / MSHA |
| JACKET MATERIAL: | Flame Retardant Polyvinyl Chloride |
| FIBER COUNT: | 2 to 36 |
| FIBER TYPE: | Single-Mode (ESMF, Bend-Insensitive) Multimode (62.5/125-OM1, 50/125-OM2+, OM3, OM4) |

S835 Series – Tight Buffer Pressure Extruded Rugged Polyurethane Cable



| | |
|-------------------------|---|
| FLAME RATING: | MSHA |
| JACKET MATERIAL: | Flame Retardant Polyvinyl Chloride |
| FIBER COUNT: | 2 to 12 |
| FIBER TYPE: | Single-Mode (ESMF, Bend-Insensitive) Multimode (62.5/125-OM1, 50/125-OM2+, OM3, OM4) |

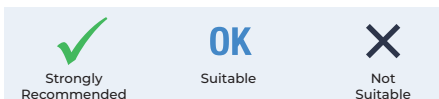


MINING CABLES

CABLE FAMILIES AT A GLANCE



| | North American Designs (ICEA/UL/MSHA US Standard, Approval CSA Canadian Standard, Approval) | Cylindrical Reels | Mono Spiral Reels | Pumps | Draegers | Excavator-Dragline Trailing Operations | Belt Conveyor and Fixed Installation | Cable Booms | European Designs (VDE – German Standard BS/BCS – British Standard) |
|--------------|---|-------------------|-------------------|-------|----------|--|--------------------------------------|-------------|--|
| ABOVE GROUND | Bostreel: Excavator reading cables | ✓ | ✓ | ✗ | ✗ | ✗ | OK | OK | Protolon (M)-R: Excavator reading cables |
| | Type SHD / SHD-GC: For continuous use in water  | ✗ | ✗ | ✓ | ✓ | ✗ | OK | OK | Protolon (ST): For continuous use in water |
| | Type SHD / SHD-GC: For trailing operations  | OK | ✗ | ✗ | ✗ | ✓ | OK | OK | Protolon (SB) / BS 6708 (Type 321-331-631) - BS 6116 (Type 321-621): For trailing operations |
| | Type SH: Medium voltage flexible cables for fixed installations  | ✗ | ✗ | ✓ | ✗ | ✗ | ✓ | ✓ | Protolon (M)-F / BS 6708 (Type 321-331-631) - BS 6116 (Type 321-621): Medium voltage flexible cables for fixed installations |
| | Type WG and G-GC: Single core medium voltage cables  | ✗ | ✗ | ✗ | ✗ | ✗ | ✓ | ✓ | Protolon 1 Core Cables: Single core medium voltage cables |
| | N/A | ✗ | ✗ | ✓ | ✓ | ✗ | ✓ | ✓ | Protomont (M) / BCS 295 (Type 600/1000V) - BS 6708 (Type 62-63-64-201-211): Low voltage power and control cables |
| | N/A | ✗ | ✗ | ✗ | ✗ | ✗ | ✓ | ✓ | Protomont (M) MSR / -BS 6708 (Type 506-512-518-524): Data, signal and control cables for mining installations |
| | Fiberflex - RTLM, S816 S946, 5835 Series: Heavy duty sheathed flexible fiber optic cables | ✗ | ✗ | ✗ | ✗ | ✗ | ✓ | ✓ | Optoflex (M): Heavy duty sheathed flexible fiber optic cables |
| BELOW GROUND | Type SHD-CGC / SHD-PCG: Coal cutter cables for free trailing  | ✓ | ✓ | ✗ | ✗ | ✗ | OK | ✗ | Protomont (Z) / BS 6708 (Type 11-7-7M-75-307-307M-3075): Coal cutter cables for free trailing |
| | Type SHD-CGC / SHD-PCG: Coal cutter cables for chain operations  | ✗ | ✗ | ✗ | ✓ | ✗ | OK | ✗ | Protomont (V) / BS 6708 (Type 11-7-7M-75-307-307M-3075): Coal cutter cables for chain operations |
| | Type MP/Type MP-GC / Airguard/Teck MV: Medium voltage flexible cables for fixed installations  | ✗ | ✗ | ✗ | ✗ | ✗ | ✓ | ✗ | Supromont / BS 6708 (Type 321-331-631): Medium voltage flexible cables for fixed installations |
| | Type W/ Type G (Round and Flat): Low voltage reeling cables for scoops and jumbos  | ✓ | ✓ | ✗ | ✗ | ✗ | OK | ✗ | Cordaflex (S) / BS 6708 (Type 11): Low voltage reeling cables for scoops and jumbos |
| | Protomont (M) MSR / BS 6708 (Type 506-512-518-524): N/A | ✓ | ✓ | ✗ | ✗ | ✗ | OK | ✗ | Protomont (M) MSR / BS 6708 (Type 506-512-518-524): Data, signal and control cables for mining installations |
| | N/A | ✗ | ✗ | ✗ | ✗ | ✗ | ✓ | ✗ | Protomont (M) MSR / BS 6708 (Type 506-512-518-524): Data, signal and control cables for mining installations |
| | Fiberflex - RTLM, S816 S946, 5835 Series: Heavy duty sheathed flexible fiber optic cables | ✗ | ✗ | ✗ | ✗ | ✗ | ✓ | ✗ | Optoflex (M): Rubber sheathed flexible fiber optic cables |





na.prysmian.com

SPL-MIN-0013-0824

Follow us

