

Giulio Verne



DP2 CABLE LAYING VESSEL

Technical specifications



DESCRIPTION

Giulio Verne is a DP2 cable laying vessel built for most challenging worldwide subsea operations. With its 7,000 tons carousel capacity, the vessel is equipped to conduct deepest power cable lay up to 1,600m water depth.

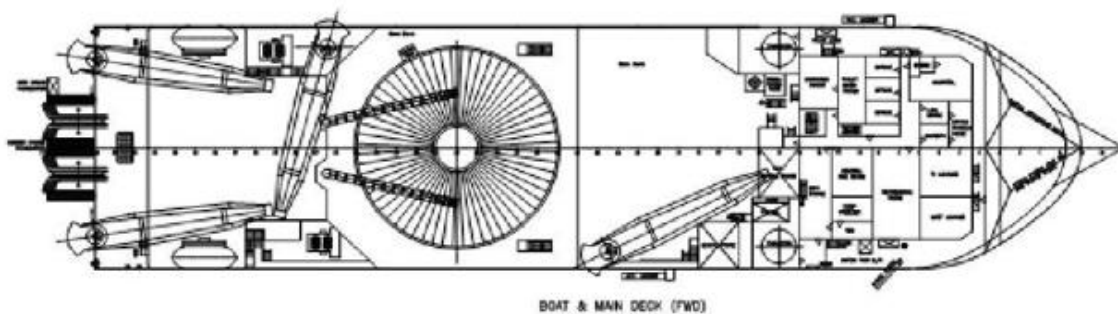
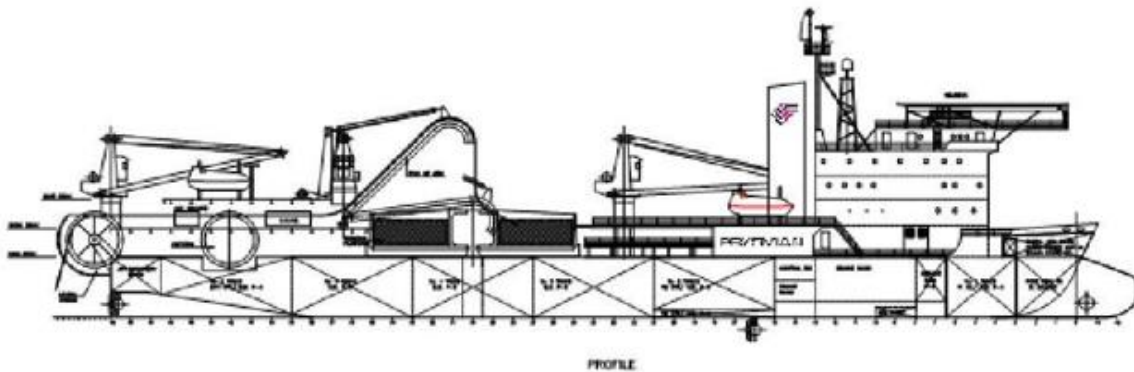
The primary function of the vessel is the execution of challenging power cable installation projects. However it can also be used on any kind of subsea and offshore project – from shallow to deep water - for which she is ideally suited and equipped.

She holds an extensive track record, on a variety of diverse subsea construction projects and she is well known in the market as a reliable and robust unit, capable of handling harsh environmental conditions.



VESSELS KEY FEATURES

- Classification: RINA DYNAPOS AM/AT R
- DP2 cable lay vessel
- 7,000 tons carousel
- Bundled cable lay capability
- Simultaneous laying and burial capabilities
- Conducted world’s deepest power cable lay at 1600m water depth
- Accommodation for 90 persons
- 2 x Aft Schottel Lips Azimuth Fixed Pitch Thrusters with Propellers in Nozzles
- 2 x Forward Retractable Schottel Lips Azimuth Fixed Pitch Thrusters with Propellers in Nozzles
- 1 x Tunnel Thruster



Technical specifications



PRINCIPLE DIMENSIONS

Length overall	133.18 m
Breadth moulded	30.48 m
Depth moulded	7.62 m
Summer draught moulded	5.37 m
Deadweight	9.366 MT
Gross Tonnage	10.674 MT
Bollard Pull	100 tons



BURIAL TOOLS

Giulio Verne can be equipped with Prysmian's Hydroplow to carry out simultaneous lay and burial to 3 m depth, dependent upon project requirements. The vessel can also be a platform for state-of-the-art jet trenching ROVs and Mass Flow Excavator tools.



CABLE OPERATIONS KEY FEATURES

CAROUSEL

Capacity	7,000 Te
Core Diameter	6 m
Outer Diameter	25 m
Tank Height	4 m (extendable to 6 m)
Product MBR	3.5 m minimum

CAROUSEL LOADING ARM

3m MBR Loading Arm with motorised wheels

STATIC TANK

Flexible static tank configuration for HVDC projects and cable recovery max 2,500 Te

STATIC TANK LOADING ARM

3m MBR Loading Arm with motorised wheels

STARBOARD LAYING LINE

DOHB machine	Caterpillar type (5 tons at 2 knots laying mode)
Capstan	6 m diameter (55 tons at 2 knots laying mode)
Auxiliary machine	Caterpillar type (2 tons)
Stern chute	6 m diameter fitted with dynamometer

PORTSIDE LAYING LINE

Linear machine	10 tons
Stern chute	6 m diameter fitted with dynamometer