

CasaLink®

Comprehensive Fiber Connectivity Solutions
Quick Reference Guide

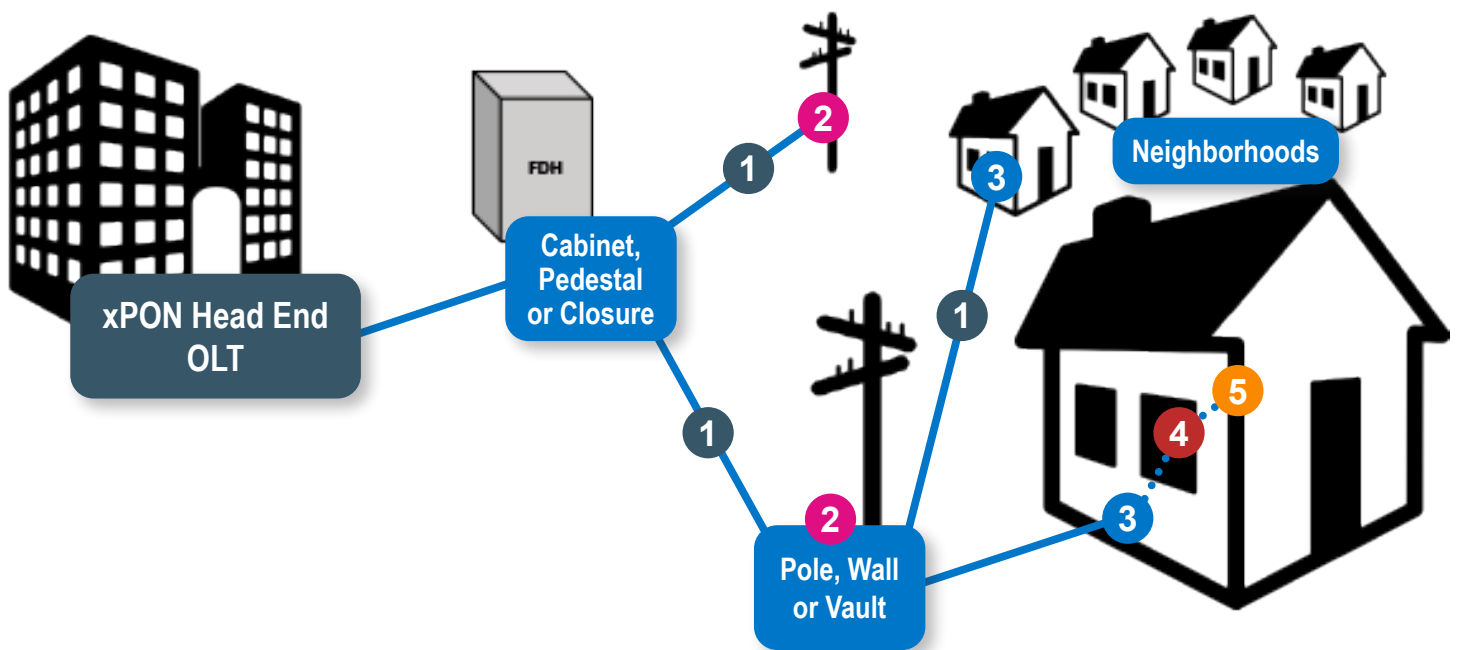


Prysmian
Group

Linking
the Future

CasaLink® connections from the headend into the home

Our extensive range of optical fiber and connectivity solutions link communications with rural communities on a global scale. Complete solutions mean tackling even the most difficult areas. At Prysmian Group - we make the last mile connection **SIMPLE**.



ezDROP™
Drop Cables



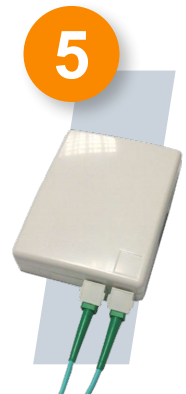
CasaLink®
Block
Terminals



Exterior
Home Drop
Terminal



Ruggedized
Patch Cord



Interior
Termination
Box

1



ezDROP™ Drop Cables

ezDROP™ Preconnectorized drop cables provide easy FttX (Fiber-to-the X) installations and terminations using existing hardware and installation methods for drops to homes and businesses.

- Its flat profile is compatible with existing wedge (P) clamps. An all-dielectric version eliminates the need for bonding or grounding. A toneable version adds a 24 AWG conductor that provides underground location capability.
- Preinstalled connectors provide for quick subscriber connections. The drop cable assemblies are precision manufactured to rigorous quality standards, assure reliable performance and compatibility. Tight tolerance control results in reliable low-loss connections and reconnections over the long term.
- Preinstalled standard connectors allow for easy and effective routing and termination in FttX equipment - available in SC, LC, FC, and ST connectors with either APC (angled) or UPC (ultra) polish performance.
- Each preconnectorized cable is made to selected lengths with your choice of connectors.

2



CasaLink® Block Terminal

The CasaLink Block Terminal (CBT) is a pre-connectorized, compact box, easily mounted on the wall or on a pole. The CBT system uses non-proprietary drop cables and connectors.

- CBT's can be used as part of a point-to-point or distributed system, so balanced or unbalanced splitters can be pre-installed within the block, increasing the capacity of the fibers accommodated within its compact size.
- CBT's are available in 4 port or 8 port options. Both are supplied as a sealed unit; pre-connectorized feeder cable and SC connectors on the drop cable which significantly reduces time needed to install this block terminal.
- CBT's can be used both for aerial and underground applications. It is robust and completely weatherproof, being IP68 rated. The installation method is exceptionally flexible, catering to a wide range of individual requirements for specific deployments.
- Unrestricted in its application, this block is smaller, lighter and much faster to install than other alternatives.

3



Exterior Home Drop Terminal

The Casalink Single Drop Terminal (CSDT) is a wall/pole mounted solution designed for the splicing of up to 2 fibers and one customer drop cable.

- The drop terminal is supplied with one cable entry seal and one cable exit seal which can be used in knock-out ports on the bottom face (left or right) or on the back for through-wall applications.
- The CSDT can accommodate flat input cables 4.3x8.3mm and round input cables up to 5mm diameter.
- Input cables can be pre-terminated with LC duplex, SC/APC, HFOC (Hardened Fiber Optic Connector) or they can be spliced in the splice tray. Output cables can be SC/APC or they can be also spliced in the splice tray.
- The drop terminal can be mounted on a wall with the included fastening materials (distance between screws is 2.36"). Or it can be supplied as splice and patch or patch only configuration

4



Ruggedized Patch Cord

Designed for handling in-home and building entrance applications – utilizing ITU G657.B3 grade bend-insensitive fiber (the highest international standard rating on the market for bend insensitive fibers).

- Available in 3mm and 4.8mm diameters, with indoor or indoor/outdoor jacket ratings. Both sizes are specifically designed to allow placement in tight 90 degree bends and small diameter slack loops.
- The 4.8mm cable is designed with a self-limiting 5mm bend radius feature in the cable construction which allows it to be installed with rounded staples and/or around sharp corners with no degradation in fiber lifetime or optical loss increase.

5



Indoor Termination Box

The Ultra-Compact Termination Box (UCTB) is designed for residential and business applications – the indoor termination box can accept up to two 2-fiber ruggedized cables that can be further spliced to four SC pigtails (PC or APC).

- Broad flexibility - the unit can be quickly installed within an office, house or communication room environment.

CasaLink Solutions Part Numbers

ezDROP™ Configurator

Example: ezDROP™ Flat, Toneable Jumper, Preconnectorized with SCU-SCU, 1 BendBright™ XS Single Mode Fiber, 150 Feet (Printed in Feet)

1 STYLE	2 FIBER TYPE	3 CABLE TYPE	4 CABLE DIAMETER	5 FIBER COUNT	6 1st CONNECTOR	7 PULLING SOCK	8 2nd CONNECTOR	9 PULLING SOCK	10 CABLE LENGTH	11 LENGTH UNIT OF MEASURE
J	F	J	F	001	A	N	A	N	150	F

1 ASSEMBLY STYLE
J Jumper (2 ends)
P Pigtail (1 end)

2 FIBER TYPE
B BendBright
E BendBright-Elite
F BendBright XS

3 CABLE TYPE
B ezINTERCONNECT™
MDU Drop
I ezDROP Flat Dielectric
J ezDROP Flat Toneable
R Toneable Round
T ezDROP Universal
Indoor/Outdoor
Toneable
U ezDROP Universal
Indoor/Outdoor

4 CABLE DIAMETER
F Flat Drop
3 2.9mm
5 4.8mm
7 7.6mm

5 FIBER COUNT
001

6 1st CONNECTOR
A SCU
B SCA
C CBT SCA
E LCU
F LCA
H HFOC Ruggedized
Connector (SC/APC)
N No Connector

*1st Connector denotes the
connector on the outside end of
cable spool.*

7 PULLING SOCK
N No Pulling Sock
P Pulling Sock

8 2nd CONNECTOR
A SCU
B SCA
C CBT SCA
E LCU
F LCA
H HFOC Ruggedized
Connector (SC/APC)
N No Connector

9 PULLING SOCK
N No Pulling Sock
P Pulling Sock

10 CABLE LENGTH (feet)
050 to 9999
(25 or 50' increments)

11 LENGTH UNIT OF MEASURE
F Feet
M Meters

CasaLink Block Terminals	PRYSMIAN P/N	QTY
CBT, 1x4 splitter, hardened SCA input and outputs	XCPSC03917	EA
CBT, 1x8 splitter, hardened SCA input and outputs	XCPSC03888	EA
CBT, 1x8 splitter, Unbalanced 70/30 splitter	XCPSC04059	EA
CBT, 1x8 splitter, Unbalanced 90/10 splitter	XCPSC03811	EA
Exterior Home Drop Terminal	PRYSMIAN P/N	UM
Exterior Home Drop Terminal with CBT style connector input	XCPSC04027	EA
CasaLink Single Drop Terminal, HFOC	XCPSC03929	EA
CasaLink Single Drop Terminal, SC/APC adapter without Tray	XCPSC03930	EA
CasaLink Single Drop Terminal, SC/APC adapter with Tray	XCPSC03931	EA
Ruggedized Patch Cords	PRYSMIAN P/N	UM
Ultra bend insensitive patch cords G657.B3, SCA to SCA, 3mm neutral, 3 meter	PAT-3-DD-H-29-S-I	MTR
Ultra bend insensitive patch cords G657.B3, SCA to SCA, 3mm neutral, 5 meter	PAT-5-DD-H-29-S-I	MTR
Ultra bend insensitive patch cords G657.B3, SCA to SCA, 3mm neutral, 10 meter	PAT-10-DD-H-29-S-I	MTR
Ultra bend insensitive patch cords G657.B3, SCA to SCA, 3mm neutral, 15 meter	PAT-15-DD-H-29-S-I	MTR
Indoor Termination Box (Ultra-Compact)	PRYSMIAN P/N	UM
EMPTY UCTB	XCPSC00130	EA
UCTB 1 pigtail & 1 adapter, SC/APC	XCPSC00235	EA
UCTB 1 SC/APC pigtail and adapter	XCPSC00515	EA
UCTB MK2 1 SC/APC pigtail and adapter	XCPSC00608	EA
UCTB 1 SC/APC adapter, (no pigtail)	XCPSC00672	EA
UCTB MK2 1 SC/APC adaptor (no pigtail)	XCPSC01041	EA



Prysmian Group, is the corporate brand which includes the three distinct commercial brands of Prysmian, Draka and General Cable – is a world leader in the energy and telecom cable systems industry. With over 140 years of experience, sales of over €11 billion, 29,000 employees in over 50 countries and 112 plants, the Group is strongly positioned in high-tech markets and offers the widest possible range of products, services, technologies and know-how.

PRYSMIAN GROUP

4 Tesseneer Drive, Highland Heights, KY 41076
+1-859-572-8000 / na.prysmiangroup.com

TLS-0011-0821

Follow us:

