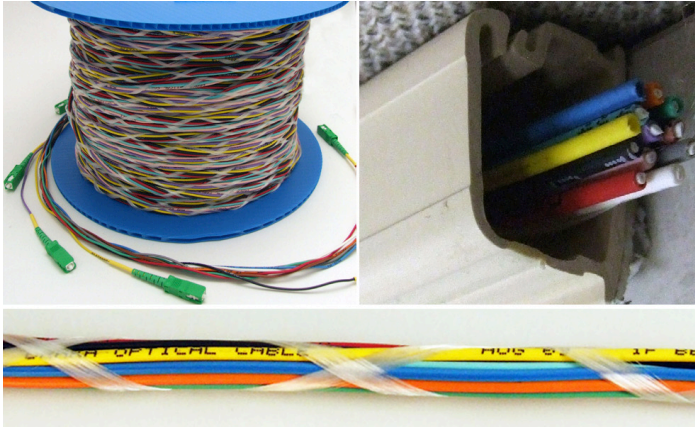


ezDROP™ Indoor Bundled MDU Assembly

Indoor Riser Cable Assembly

Prysmian



DESCRIPTION

Prysmian's ezDROP® Indoor Bundled MDU Assembly provides the installer with time and cost savings by enabling efficient and rapid deployment of optical connections to multiple locations on the same floor. This application is commonly found inside residential multi-dwelling units (MDU) and commercial multi-tenant units (MTU). This riser units and is intended for use with wall mounted conduit systems typically found in residential hallways or office corridors.

DESIGN FEATURES

- Stranded design without an outer jacket for easy access
- Incorporates Ultra Bend Insensitive Fiber (UBIF) for use in constrained spaces
- Pre-terminated with SCAPC connectors to support plug and play installation
- TIA-598 color-coded subunits for easy identification
- Factory-installed pulling sock integrated with connector packaging

SPECIFICATIONS AND RATINGS

Applications	Intrabuilding Indoor Riser for hallways of residential multi-dwelling units (MDU) and corridors of commercial multi-tenant units (MTU)
Configuration	Preconnectorized 1.6 mm tight buffered subunits, 6f or 12f versions
Fiber Count	6 or 12
Fiber Types	Bend Insensitive Fiber
Options	Preconnectorized end with pulling sock attachment Packaged on disposable reel . Standard lengths of 100, 150, 200, 250, 300, 400, 500 feet

Prysmian

A Brand of Prysmian Group

Prysmian Group

4 Tesseneer Drive, Highland Heights, KY 41076
+1-859-572-8000 / na.prysmiangroup.com
TLS-DS-G-105 0121

ezDROP™ Indoor Bundled MDU Assembly



Indoor Riser Assembly

ezDROP Indoor Bundled MDU Assembly

Fiber Count	Unit Size Inches (mm)	Bundle Diameter Inches (mm)	Bundle Weight lb/kft (kg/km)	Bundle Bend Radius No Load inches (cm)
6	0.063 (1.6)	0.20 (< 5)	12 (18)	1 (25)
12	0.063 (1.6)	0.28 (<7)	21 (31)	1 (25)

Temperature Range

Installation: -22° F to +140° F (-30° C to +60° C)
Operation: -40° F to +158° F (-40° C to +70° C)

Sub-Unit Mechanical Requirements

Diameter: 1.6 mm
Maximum Installation Load: 15 lbf
Maximum Long Ter Load: 5 lbf
Bend Radius: 5 mm with no load

Attenuation: 0.35/0.35/0.22 dB/km at 1310/1383/1550 nm

Additional Environmental & Mechanical Performance Requirements:
Telcordia GR 409 Interconnect Requirements

Bundle Cable Pulling Tension: Pulling sock tension is specified to 25lbf. Pulling sock diameter < 1"

Ordering Guide

Length	Description	Draka Catalog Number
100	Drop Indoor Bundle 12f	FPJDURB12BX100F
150	Drop Indoor Bundle 12f	FPJDURB12BX150F
200	Drop Indoor Bundle 12f	FPJDURB12BX200F
250	Drop Indoor Bundle 12f	FPJDURB12BX250F
300	Drop Indoor Bundle 12f	FPJDURB12BX300F
400	Drop Indoor Bundle 12f	FPJDURB12BX400F
500	Drop Indoor Bundle 12f	FPJDURB12BX500F
100	Drop Indoor Bundle 6f (Fibers 1-6 Blue-White)	FPJDVRB06BX100F
150	Drop Indoor Bundle 6f (Fibers 1-6 Blue-White)	FPJDVRB06BX150F
200	Drop Indoor Bundle 6f (Fibers 1-6 Blue-White)	FPJDVRB06BX200F
250	Drop Indoor Bundle 6f (Fibers 1-6 Blue-White)	FPJDVRB06BX250F
300	Drop Indoor Bundle 6f (Fibers 1-6 Blue-White)	FPJDVRB06BX300F
400	Drop Indoor Bundle 6f (Fibers 1-6 Blue-White)	FPJDVRB06BX400F
500	Drop Indoor Bundle 6f (Fibers 1-6 Blue-White)	FPJDVRB06BX500F
100	Drop Indoor Bundle 6f (Fibers 7-12 Red-Aqua)	FPJDWRB06BX100F
150	Drop Indoor Bundle 6f (Fibers 7-12 Red-Aqua)	FPJDWRB06BX150F
200	Drop Indoor Bundle 6f (Fibers 7-12 Red-Aqua)	FPJDWRB06BX200F
250	Drop Indoor Bundle 6f (Fibers 7-12 Red-Aqua)	FPJDWRB06BX250F
300	Drop Indoor Bundle 6f (Fibers 7-12 Red-Aqua)	FPJDWRB06BX300F
400	Drop Indoor Bundle 6f (Fibers 7-12 Red-Aqua)	FPJDWRB06BX400F
500	Drop Indoor Bundle 6f (Fibers 7-12 Red-Aqua)	FPJDWRB06BX500F



A Brand of Prysmian Group

Prysmian Group

4 Tesseneer Drive, Highland Heights, KY 41076
+1-859-572-8000 / na.prysmiangroup.com
TLS-DS-G-105 0121