

# Multi-Conductor, Unshielded

CSA Type AWM I/II A/B, NEC/CEC Type CMG (CSA C/US)

**Product Construction:**

**Conductor:**

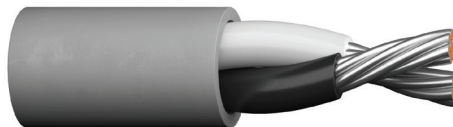
- 22 thru 14 AWG fully annealed stranded tinned copper per ASTM B33

**Insulation:**

- Premium-grade, color-coded PVC
- Color code: See charts below

**Jacket:**

- PVC, gray
- Temperature range: -20°C to +105°C
- Includes ripcord



**Applications:**

- Public address systems
- Intercoms
- Internal telephones
- Suggested voltage rating: 300 or 600 volts

**Compliances:**

- CSA Type AWM (105°C, 600 V)
- NEC/CEC Type CMG (CSA: 105°C, 300 V)
- RoHS Compliant Directive 2015/863/EU (RoHS-3)
- Passes CSA FT4 Vertical Flame Test

**Packaging:**

- Please contact Customer Service for packaging and color options

CATALOG NUMBER	NO. OF COND.	AWG SIZE	COND. STRAND	NOM. INS. THICKNESS		NOM. JACKET THICKNESS		NOMINAL O.D.		COLOR CODE	NOM C-C. CAP. pF/ft
				in	mm	in	mm	in	mm		
<b>CSA TYPE AWM, CSA C/US TYPE CMG</b>											
<b>C6700A</b>	2	22	7/30	0.011	0.28	0.016	0.41	0.134	3.40	2	23.5
<b>C6701A</b>	3	22	7/30	0.011	0.28	0.016	0.41	0.142	3.61	2	23.5
<b>C6702A</b>	4	22	7/30	0.011	0.28	0.016	0.41	0.155	3.94	2	23.5
<b>C6704A</b>	6	22	7/30	0.011	0.28	0.016	0.41	0.185	4.70	2	23.5
<b>C6717A</b>	2	20	7/28	0.011	0.28	0.016	0.41	0.148	3.76	2	25.7
<b>C6718A</b>	4	20	7/28	0.011	0.28	0.016	0.41	0.157	3.99	2	25.7
<b>C6725A</b>	2	18	16/30	0.012	0.30	0.016	0.41	0.172	4.37	1	27.3
<b>C6714A</b>	2	18	16/30	0.012	0.30	0.016	0.41	0.172	4.37	2	27.3
<b>C6726A</b>	3	18	16/30	0.012	0.30	0.016	0.41	0.183	4.65	2	27.3
<b>C6727A</b>	4	18	16/30	0.012	0.30	0.016	0.41	0.201	5.11	2	27.3
<b>C6706A</b>	6	18	16/30	0.012	0.30	0.016	0.41	0.242	6.15	2	27.3
<b>C6735A</b>	2	16	19/0117	0.012	0.30	0.016	0.41	0.192	4.88	2	29.4
<b>C6736A</b>	3	16	19/0117	0.012	0.30	0.016	0.41	0.204	5.18	2	29.4
<b>C6737A</b>	4	16	19/0117	0.012	0.30	0.016	0.41	0.226	5.74	2	29.4
<b>CSA TYPE AWM (FT4)</b>											
<b>C6746A</b>	2	14	19/0147	0.015	0.38	0.016	0.41	0.234	5.94	2	30.8
<b>C6747A</b>	4	14	19/0147	0.015	0.38	0.016	0.41	0.276	7.01	2	30.8

\*A – Capacitance between conductors

\*B – Capacitance between one conductor and other conductors connected to shield  
Data subject to change.

**COLOR CODE CHART 1**

NO. OF COND.	COLOR
1	Black
2	White

**COLOR CODE CHART 2**

NO. OF COND.	COLOR
1	Black
2	White
3	Red
4	Green
5	Brown
6	Blue
7	Orange
8	Yellow